

SSCA Presentation

Wondering where you can go safely this winter
without fearing countries closing borders ?

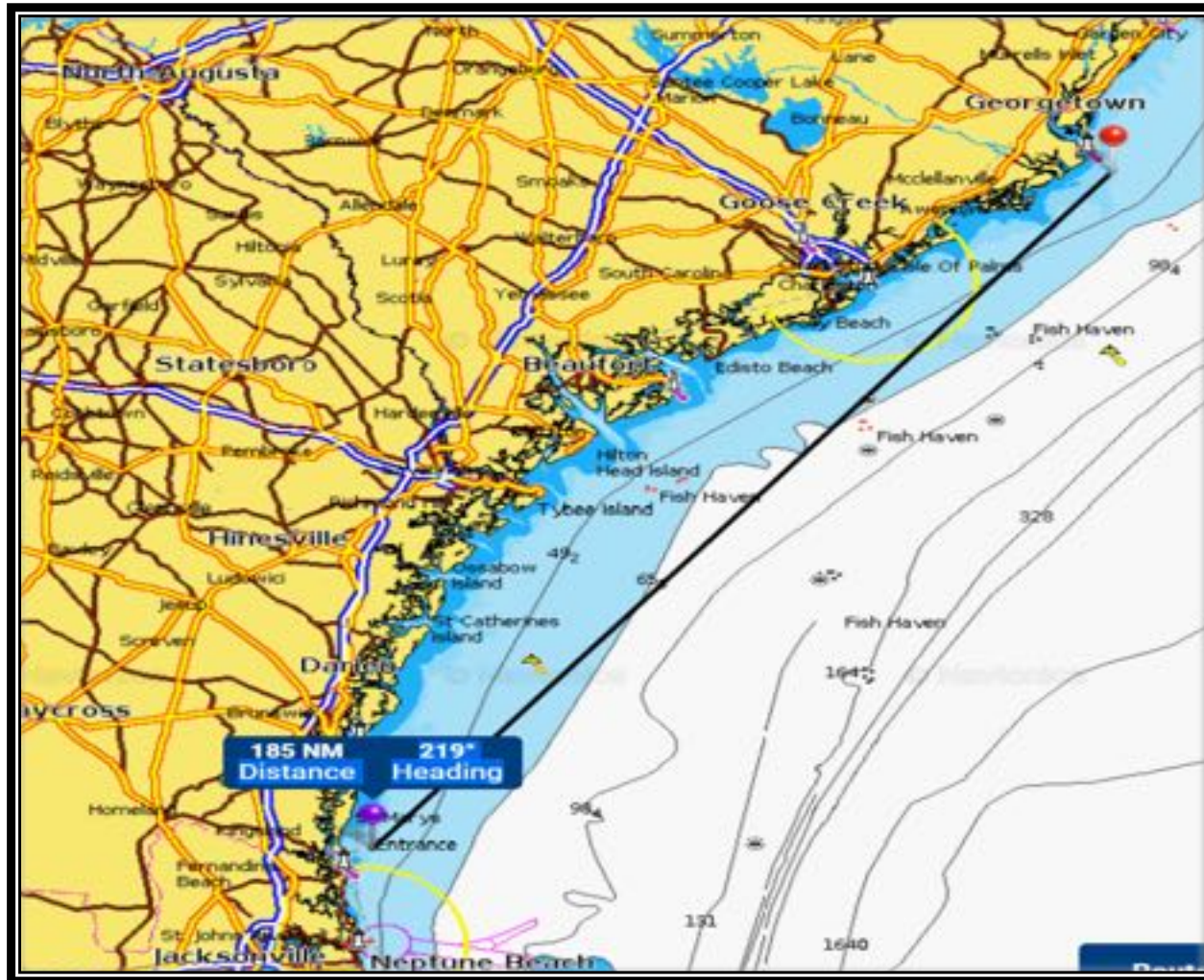
Seven Seas Cruising Station Hosts (CSH) Stephen
and Dawn Bell, are currently sailing the
southeastern coast USA in their beloved
catamaran, Pilar.

Discover new opportunities in the sea islands and
coastal towns of South Carolina and Georgia that
offer beautiful waters, nature and marine creatures
that you won't find elsewhere.



*This presentation is a guideline based on our experiences. We
accept no responsibility for your use of this information.

SC/GA Coastline



Navigation Points

- Strong Currents in the Inlets – 3 knots.
- Middle Ground shallows are present in most inlets.
- Tides – 4 - 6 ft.
- Can easily go from inlet to inlet in a day.
- Winds - General direction on the coastline runs about 210-220 degrees to the southwest, so keep that in mind when doing sail plan. So, a N-NW wind means great southerly cruising with little wind-wave effect since the wind is blowing from the shoreline.
- Cruising coastwise at 6-10 miles offshore, far from Gulf Stream, can keep you in the lee of shore and reduce the wave effect of a strong N-NW wind.
- Watch cold fronts as wind will likely clock around 360.
- Freeze protection generally not necessary. Avg temps Upper SC - January lows in mid30s, highs in mid 50s. Lower GA - January lows mid 40s, highs in mid 60s.



Unique Activities

- Plantation tours – Rice, Tea, Tobacco, Sugar, Indigo, Cotton
- Protected Wildlife Preserves and State Parks ★
- Oyster Bed rejuvenation
- Live Oaks with Spanish Moss
- Marshes with Palmettos, Maritime Forests ★
- Beaches and Tidal flats only at Low tide ★
- Historic Sites and Hotels, Architecture & Culture
- Low Key Low Country
- Southern Food
- Golden Isles, Uninhabited Sea Islands ★

SC/GA Coastline Key Inlets

South Carolina

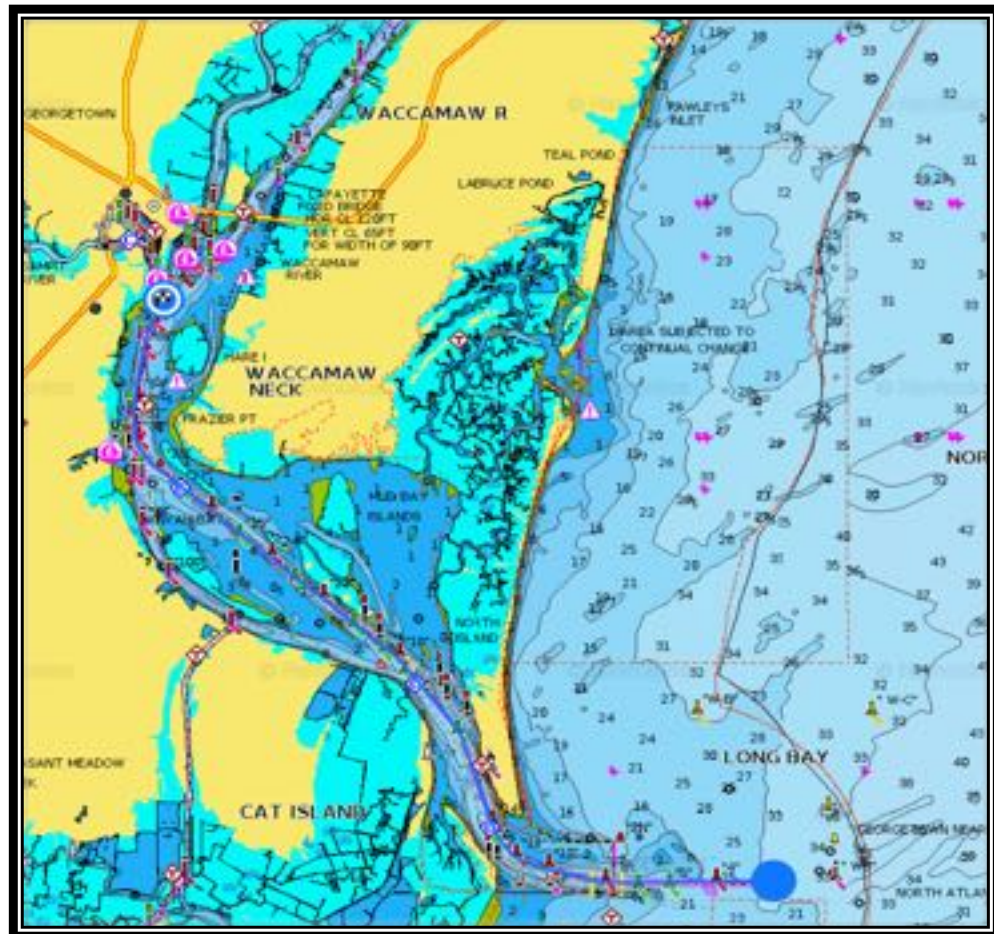
- New River Inlet – Myrtle Beach
- Murrells Inlet
- Winyah Bay - Georgetown
- Charleston Harbor
- Stono Inlet
- N. Edisto Inlet
- S. Edisto Inlet
- St. Helena Sound
- Port Royal Sound
- Calibogue Sound – Hilton Head

Georgia

- Savannah River Inlet
- Wassaw Sound
- Ossabaw Sound
- St. Catherine's Sound
- Sapelo Sound
- Doboy Sound
- St. Simon Sound
- St. Andrew Sound
- St. Mary's Sound

- Winyah Bay is a good Inlet but long and with strong bay currents. Once inside Winyah Bay goes N. to the ICW in the Waccamaw River. It is a good inlet leading to Georgetown and then North to Little River Inlet in the ICW.
- Little River Inlet to Georgetown on ICW is a gorgeous treasure – cypress trees in black water.
- 17 miles from the sea buoy to Georgetown, a quaint fishing village.
- February shad run - fisherman string nets across river, so be careful - they will move nets for you.

Winyah Bay

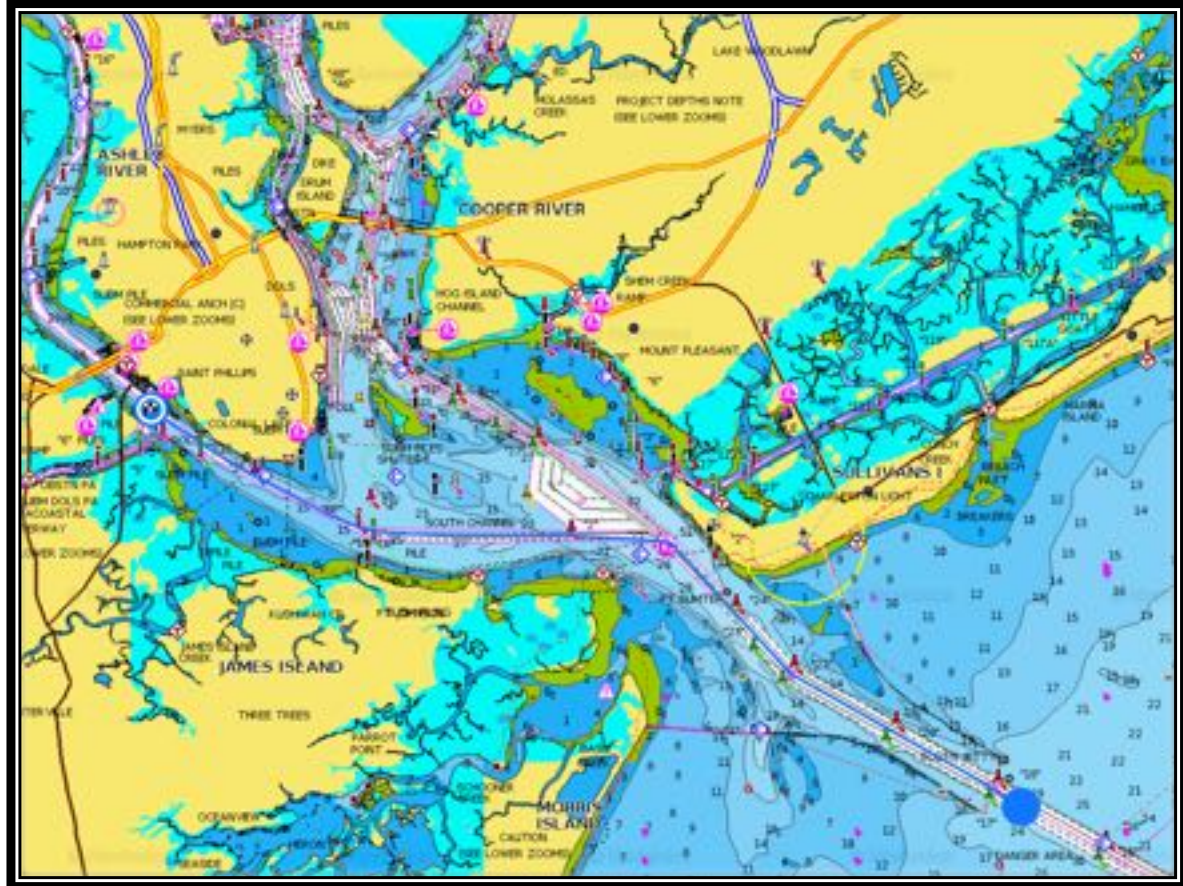


Charleston Harbor

Anchorage mostly on Ashley River. Dinghy to Ashley marina to go to Charleston.

Also can anchor in front of town and get to Market street and King St. via dinghy.

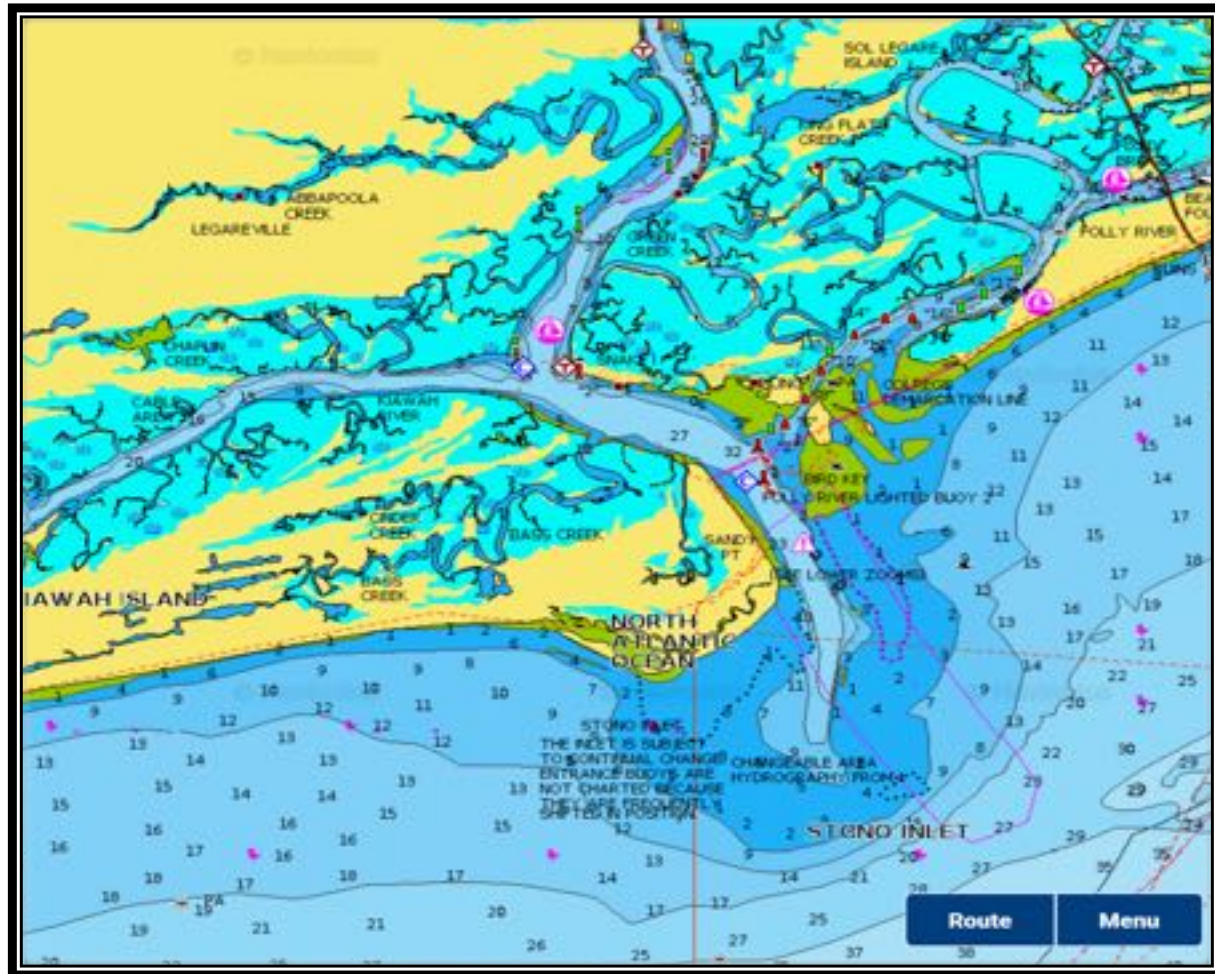
Heavy ship traffic, maintain AIS, they will call you on radio and likely request you alter course as they come through.





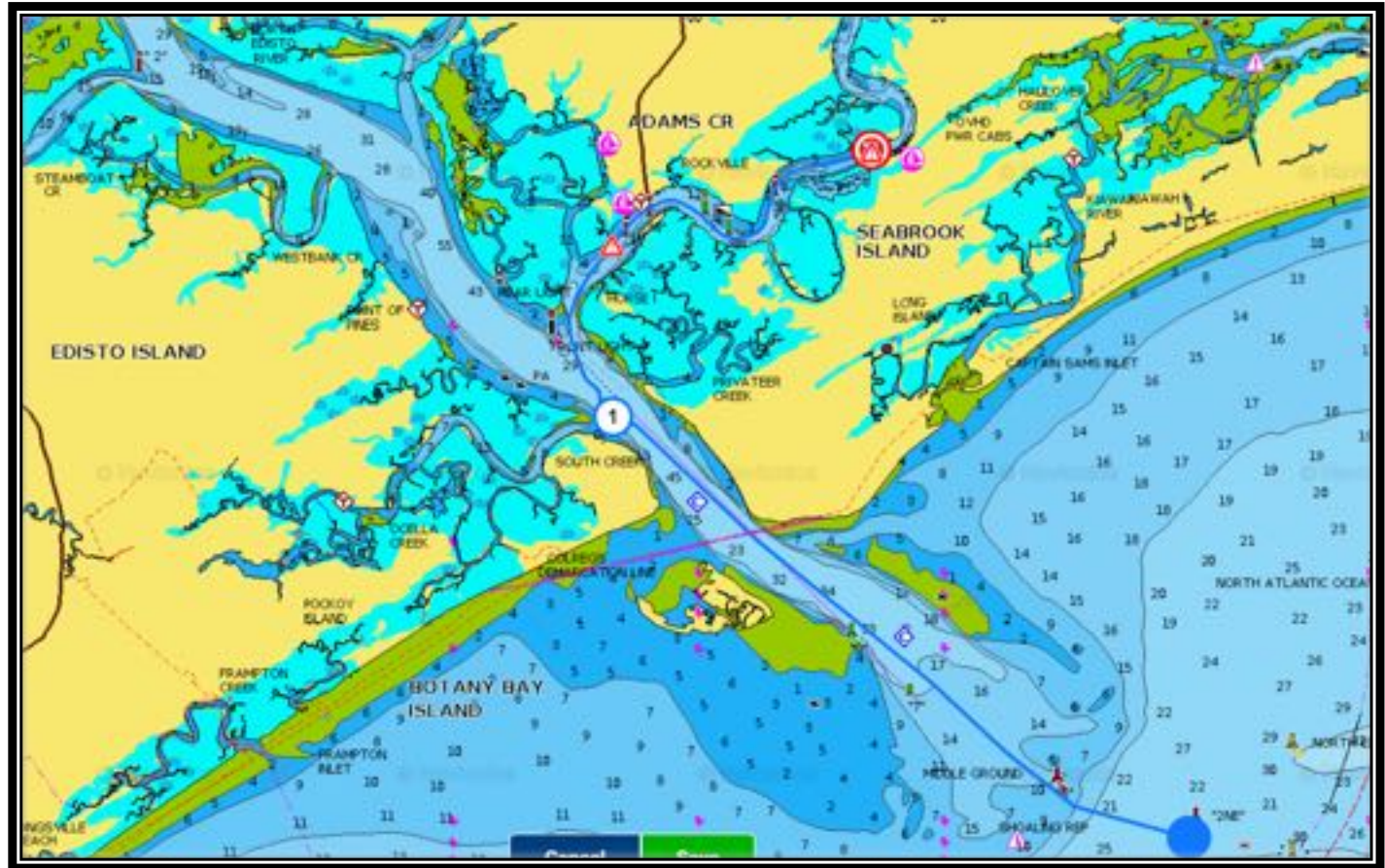
Stono Inlet

- Difficult inlet due to sand shifts, but they have dredged. Even so watch your draft carefully. Would not recommend if more than 5'. Markers are not charted in most nav systems because they move so often.
- Can anchor near Folly Beach (small beach – residential surfer town). Marinas available.
- Kiawah on the south is mostly private property but could anchor there. Watch currents and make sure your anchor is set hard.



North Edisto Inlet

- Very good inlet with a middle ground that can show 9-10 feet of water. wind. Deep water once inside the inlet.
- Bohicket Marina is not far up Bohicket Creek. Good slips, anchorage and half mile walk to ample groceries.
- Good anchorages at Deveau Bank, Botany Bay or Privateer Point, Bohicket Creek (front of Rockville, or Bohicket Marina).

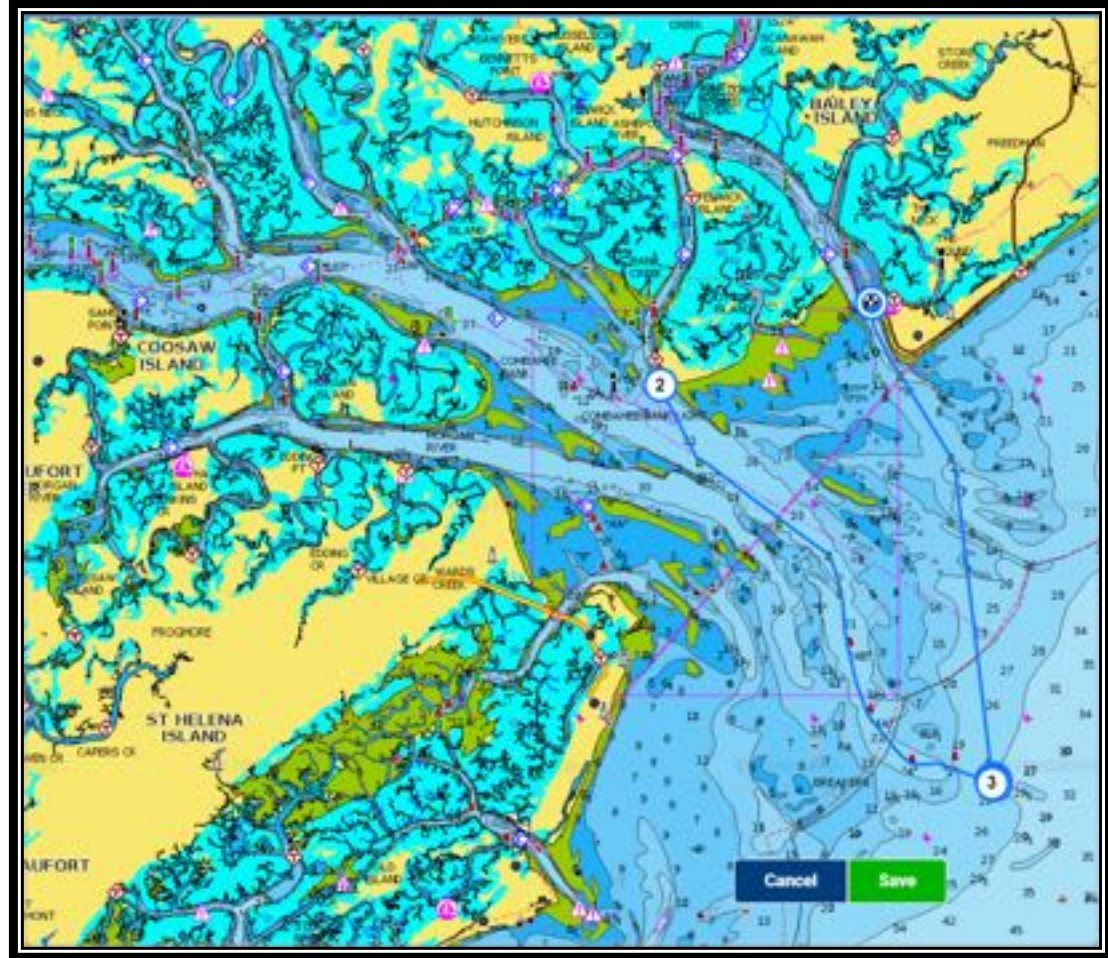






South Edisto & St. Helena Sound

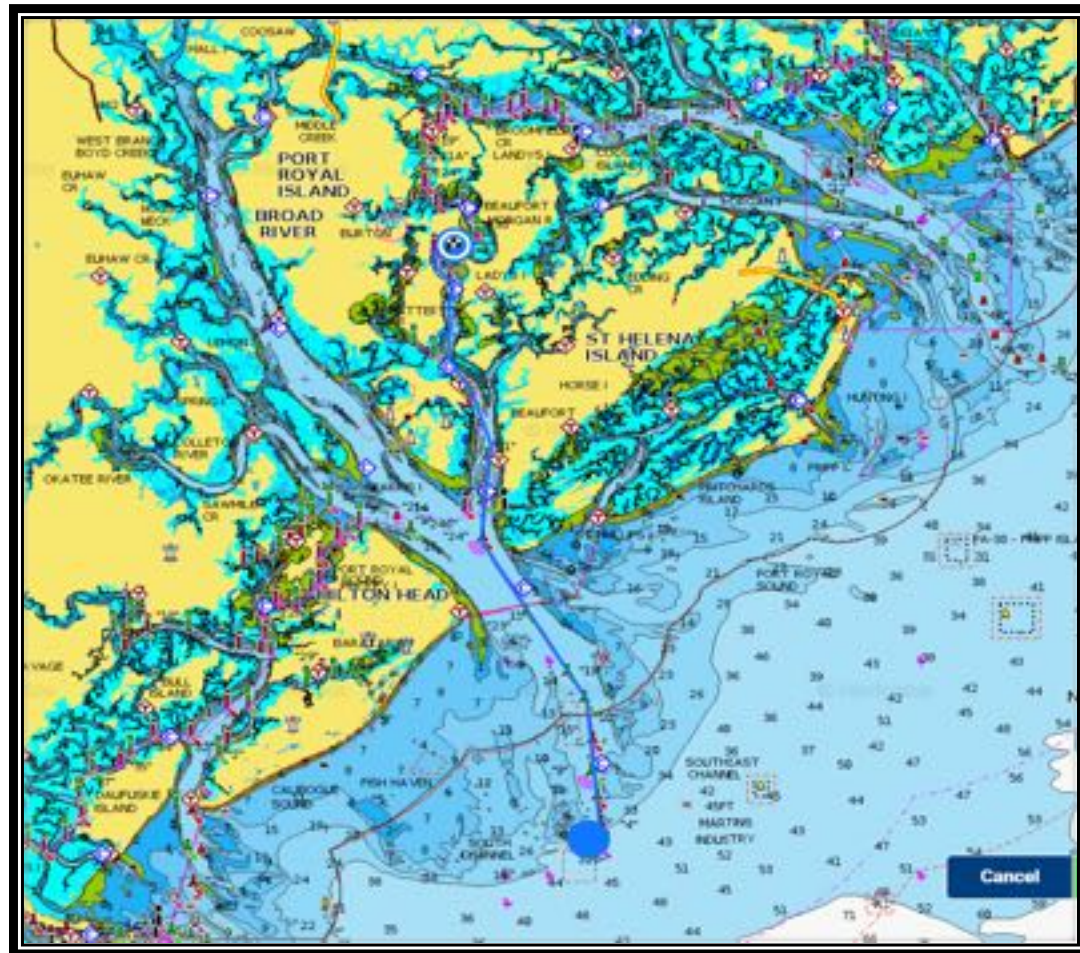
- Very big sound with lots of shoals. Marked well for entry.
- Edisto Inlet – Good inlet, Middle ground, relatively short and good anchorage on Big Bear Creek by Edisto State Park. Dinghy to state park dock to hike state park. Marinas available.
- St. Helena Sound – 10 miles to Otter Island anchorage. 14 miles down Morgan River to Dataw Island (Marina there). Middle ground shallow (8 ft). Also can access Hunting Island, Fripp Island, Morgan Island (Monkey Island). Can also get to Beaufort from here (long way) under Lady Island draw bridge. 65 ft bridge on north side of Beaufort.





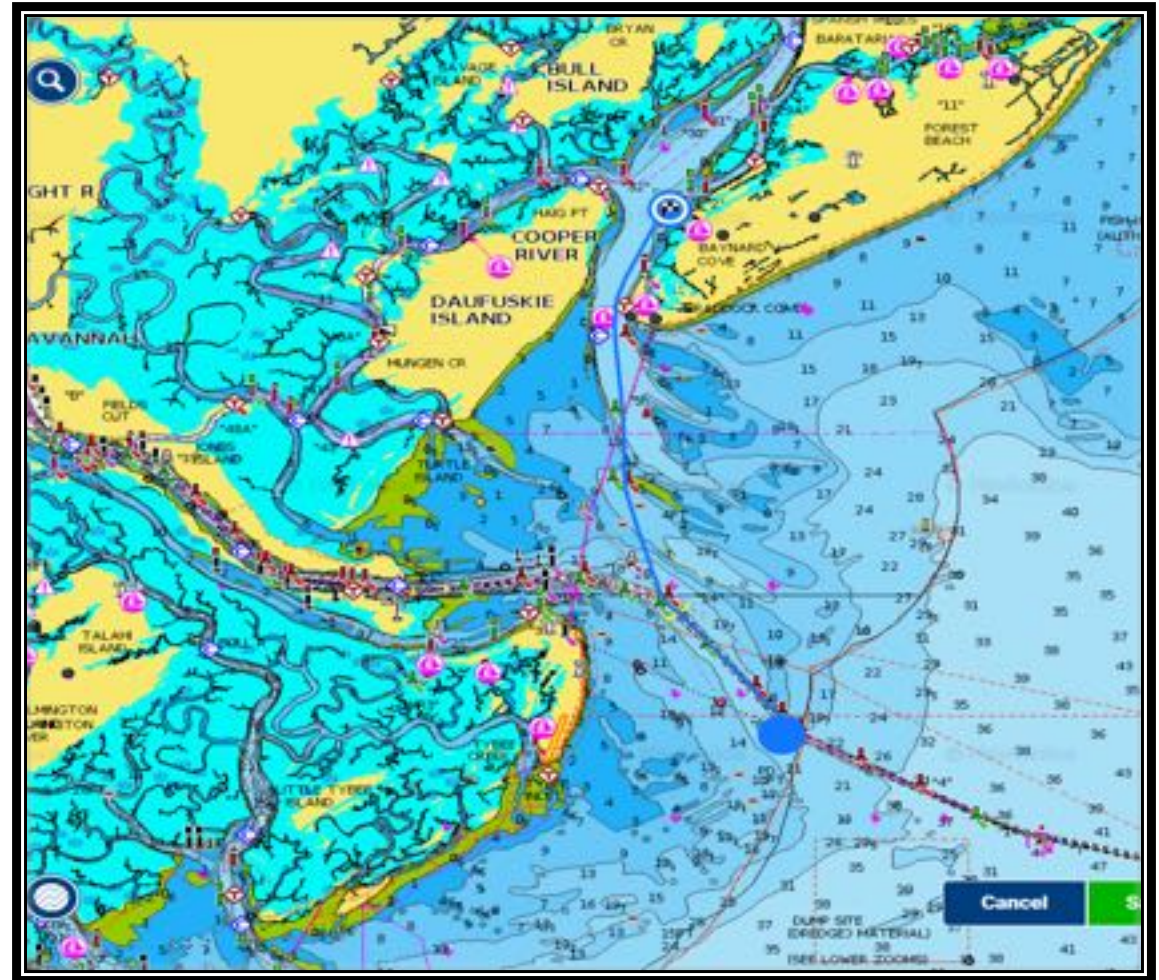
Port Royal Sound – Hilton Head

- Southern route goes 20 miles to Beaufort, 12 miles to good anchorage.
- Northern route goes to Hilton Head. Bridge on back side of Hilton Head
- Very long deep water shipping channel to Paris Island Marine Corp base.
- Can get to ICW via Calibouge Sound.



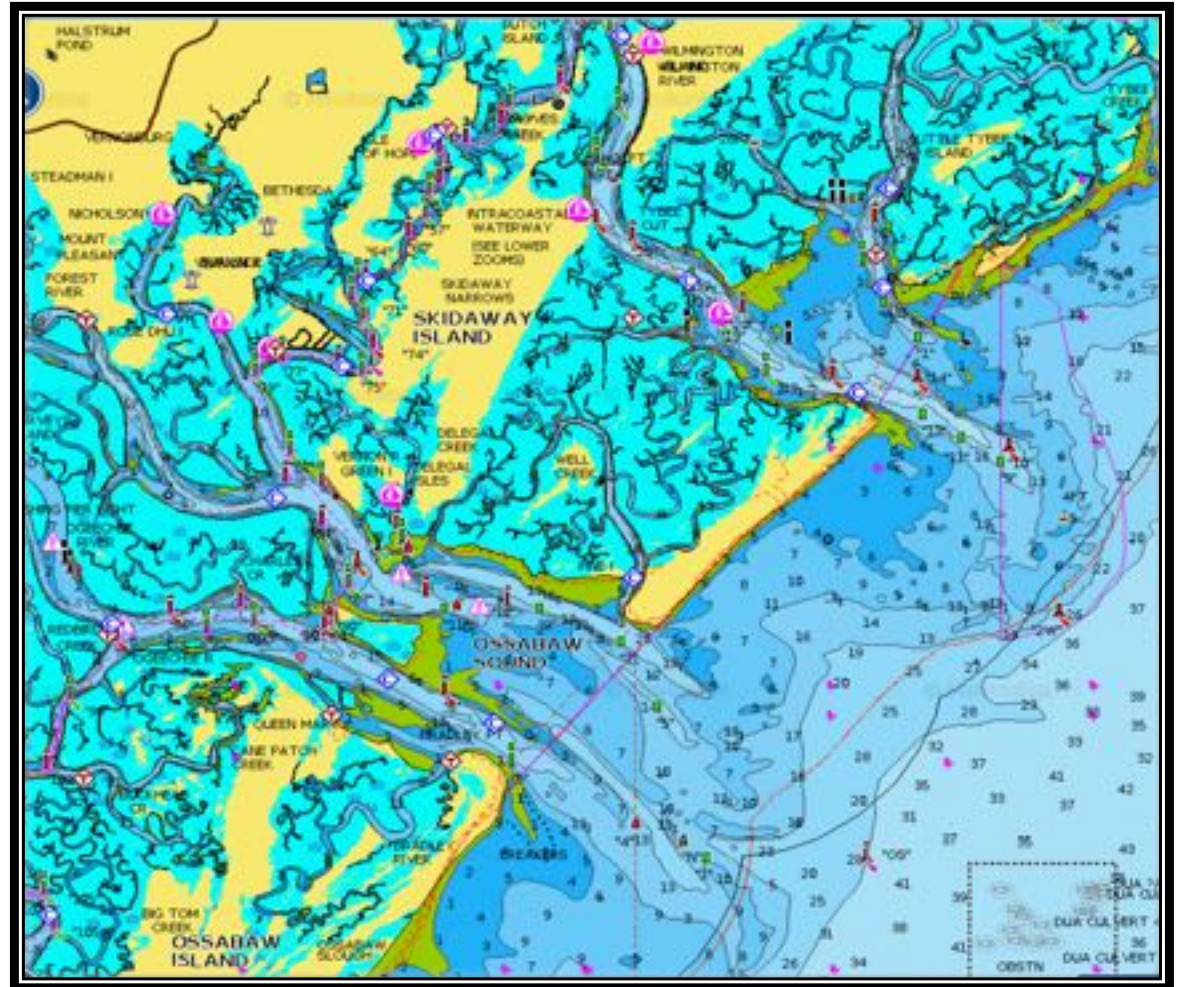
Savannah River-Calibogue (Hilton Head)

- Savannah River Inlet leads to Downtown Savannah in a heavily trafficked deep-water shipping channel. There is a marked route off the inlet to Calibogue Sound with access to Hilton Head and Harbor Town Marine.
1. North route goes to south side of Hilton Head SC, where you can anchor in Calibogue Sound. Can go to Harbor Town Marina (anchorage). Can visit Dafuskie Island (anchor or marina)
 2. Take straight route to city of Savannah. Deep water ship channel, busy port, can temporarily dock by Hyatt or Westin Resorts but not recommended due to heavy ship traffic.



Wassaw and Ossabaw Sounds

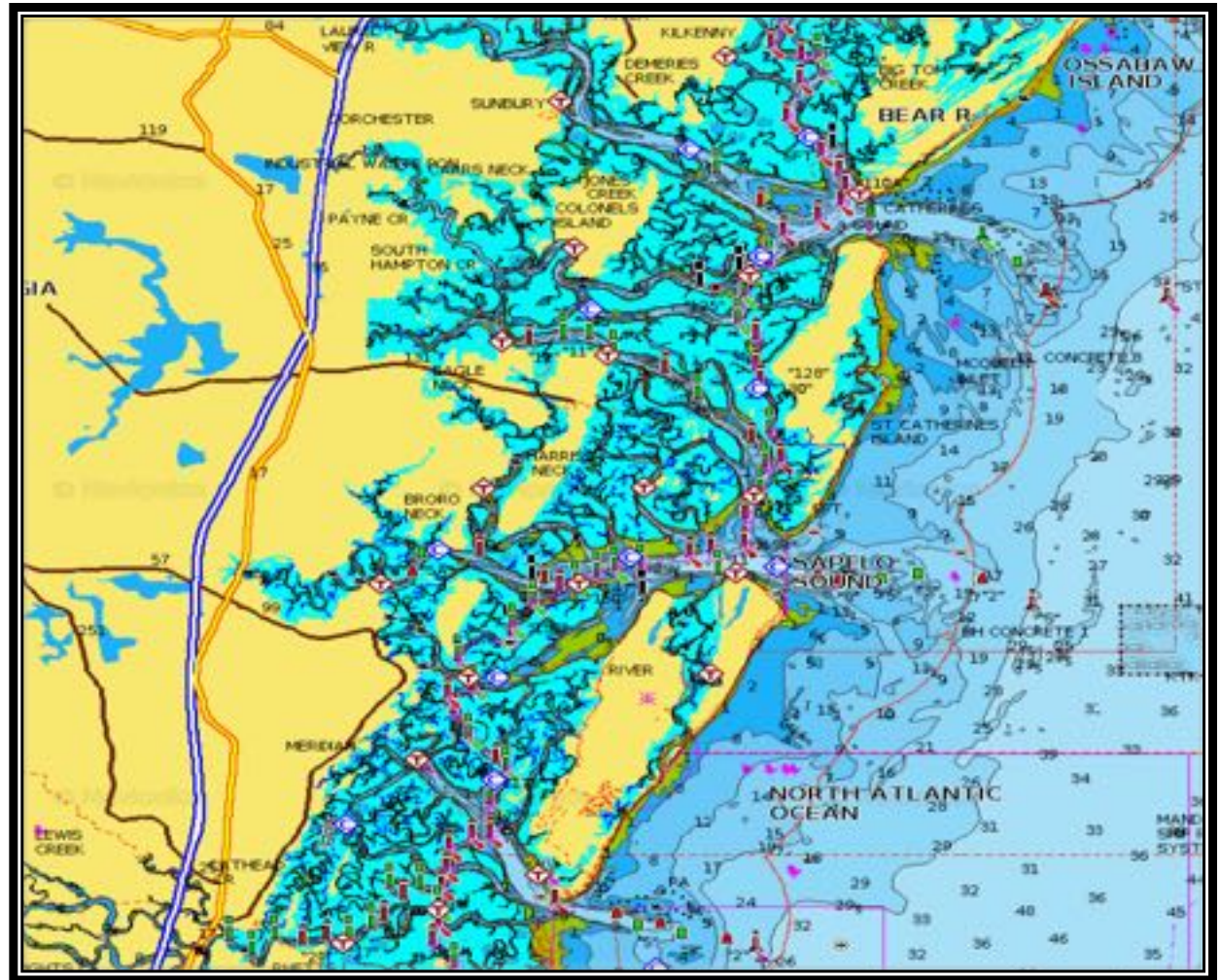
- Inlets are to the north and south of Wassaw Island. Both are well marked with Ossabaw having more shoals (marked 8 feet of water)
- Wassaw Sound – anchorages by Tybee Island, Thunderbolt Marina, Wilmington Island, Skidaway Island, Isle of Hope, and Bull River. Well marked, but one marker missing last time. All have marinas. Lots of marsh, tidal flats and rivers to explore - oysters on banks to harvest what you can eat. Wilmington River is deepest.
- Ossabaw Sound – long inlet, shallow waters, but navigable, well marked, once inside, deep water right on beach of Wassaw Island, which is good anchorage. Wassaw National Wildlife Refuge easily accessed for hiking and 7 miles of beachfront.





St. Catherine's Sound, Sapelo Sound, Doboy Sound

- All three of these inlets are well marked and have ample water at all tides. Each intersects with the ICW just inside the inlets. They are flanked by St. Catharine's, Blackbeard and Sapelo Islands. All three islands are nature preserves or National Wildlife management areas. All are accessible only by boat.
- Cities
- Anchorages
- Marinas



St. Simon

- 10 miles from Sea Buoy to inside of inlet. You can cut the Sea Buoy to shorten the inlet to 6 miles. Very well marked deep channel.
- Jekyll Island, city of Brunswick.
- Marinas: Golden Isles Morningstar Marina – new docks



St. Andrew Inlet

- Inlet is a deep channel but not many markers. Just inside the inlet is the ICW so remember if you go N. treat your Red and Greens opposite.
- Cities
- Anchorages
- Marinas



St. Mary's

- Inlet used for US Navy ballistic missile submarines. Very deep, well marked
- Inlet flanked by Cumberland Island N., Amelia Island & Fernandina Beach S.
- Anchorages – Good spots all along the ICW and Egan's Creek
- Marinas along Amelia Island which has a pleasant beach comber town.



For More Information – Blogs & Videos

Videos and Blogs - Trips:

- Savannah Georgia Sailing - <https://bluedotvoyages.com/sailing-in-savannah-winter-2020>
- Savannah Georgia video <https://www.youtube.com/watch?v=kRtKWJuTGjM>
- Monkey Island (Morgan Island), St. Helena Sound - <https://www.youtube.com/watch?v=zySUedyo6PU>
- Seabrook Island - <https://bluedotvoyages.com/labor-day-2018-seabrook-island>
- Seabrook/Kiawah Island - https://www.youtube.com/watch?v=FF22_CoVtdo
- Seabrook to Charleston - <https://www.youtube.com/watch?v=YTKM6KcXFR8>
- Edisto Beach - <https://www.youtube.com/watch?v=CUat5EoT2ig>
- Edisto Inlet - <https://www.youtube.com/watch?v=eQwo9kUJFbc>
- Sailing from Charleston to Savannah - <https://www.youtube.com/watch?v=iofsL6d8PWE>
- Edisto Island – Beach & State Park <https://www.youtube.com/watch?v=1kZb90GD4OM>

Videos and Blogs - Activities:

- Drone <https://www.youtube.com/watch?v=XFGQVpK8mp4>
- Paddleboarding in high currents - <https://www.youtube.com/watch?v=ydwW1iVI3lo>
- Smoke on the Water - <https://www.youtube.com/watch?v=hGN-7fOtQ2s>
- Seabrook Island Horseback riding on beach - https://www.youtube.com/watch?v=pVn3XYjb6_M
- Oyster Harvesting - <https://www.youtube.com/watch?v=oSboGc1zEMg>
- Blue Crab catching - https://www.youtube.com/watch?v=4MSUqe-m_II
- Dolphin Strand Feeding - <https://www.youtube.com/watch?v=kNV-LLnfNPg>
- Flounder Giggling - <https://bluedotvoyages.com/flounder-giggling>

For More Information

Email us at pilar@bluedotvoyages.com

Visit website at <https://bluedotvoyages.com>

Facebook site at <https://facebook.com/bluedotvoyages>

Youtube site at <https://youtube.com/sailingpilar>

Instagram site at <https://instagram.com/bluedotvoyages-sailingpilar>